

3DProSeed™ StromaLine Pancreatic Cancer-Associated Fibroblasts

(Catalog Number: ECT.STRL.PACAF.096)

FOR RESEARCH USE ONLY. NOT FOR USE IN DIAGNOSTIC PROCEDURES

Contents and storage

Product	Part number	Quantity	Storage	Description
StromaLine Pancreatic CAF	ECT.STRL.PACAF.096/01	1x vial, 10 ⁶ cells	Liquid N ₂	Cryopreserved human pancreatic CAF
StromaLine Pancreatic CAF Medium	ECT.STRL.PACAF.096/02	2x bottles 500 mL	2-4 °C	Low-serum culture medium optimized for the growth of the StromaLine Pancreatic CAF in 3DProSeed hydrogels.
StromaLine PancreaticCAF 3DProSeed hydrogel plate	ECT.STRL.PACAF.096/03	1x96-well hydrogel plate	RT in correct orientation	3DProSeed 96-well glass-bottom hydrogel plate optimized for the growth of the StromaLine Pancreatic CAF

Product Overview

The 3DProSeed™ StromaLine Pancreatic Cancer-Associated Fibroblasts (CAF) is a pre-developed human stromal model made of patient-derived pancreatic stellate CAF in synthetic, optically transparent 3D hydrogels. The platform is optimized for generating relevant 3D stromal cultures enabling the sequential addition of tumor cells. It allows the study of the assembly and deposition of a native extracellular matrix resembling the stromal component of the tumor microenvironment of human pancreatic cancers. The hydrogel is optically transparent and pre-casted in a 96-well imaging plate, allowing a wide range of microscopy and high-content assays. Additionally, the hydrogel can be enzymatically dissolved at the end-point of the culture, and the cells, as well as the extracellular matrix fraction, can be retrieved and processed for further biochemical analysis, including proteomics and transcriptomics analyses. The cells can be delivered directly into your laboratory pre-plated (growing in the hydrogel plate) or cryopreserved (ready for seeding in the hydrogel plate whenever needed). The 3DProSeed StromaLine cells, medium, and hydrogel plate are quality tested together and guaranteed to give optimum performance as a complete system.

Seeding Protocol for Cryopreserved Cells

1. Bring the StromaLine Pancreatic CAF Assay Plate at room temperature and the StromaLine Pancreatic CAF Medium at 37 °C for at least 30 min prior to use.
2. Thaw the frozen StromaLine Pancreatic CAF vial directly upon arrival or after storing in liquid N₂ in a 37 °C water bath for a maximum of 90 sec.
3. Carefully mix the cell suspension at least 20x with a P1000 pipet and transfer to a 50-mL conical tube containing 20 mL of StromaLine Pancreatic CAF Medium, pre-warmed at 37 °C. **Do not centrifuge the cell suspension.** Centrifugation leads to decreased cell numbers and viability. This step generates a cell suspension with a density of 50,000 cells/mL, sufficient to seed the entire 96-well plate. We recommend this density for optimal results.
4. Carefully peel off the sealing adhesive foil from the StromaLine Pancreatic CAF Assay Plate. A liquid meniscus may form on top of the wells due to the negative pressure applied by removing the foil, but it pops and disappears within seconds. Using a P100 pipet, insert the pipet tip in the well and descend along the side wall until you reach the plastic ring inside the well. Aspirate carefully the

storage saline buffer. Do not touch or aspirate right over the hydrogel to prevent damaging it. Avoid aspirating the storage buffer using a vacuum pump as the suction force may damage the hydrogel. The storage buffer is a Tris-based buffer, and if some left-over remains in the well, it will not negatively affect culture development.

5. Add 200 μL /well of the cell suspension prepared in step 3 to the StromaLine Pancreatic CAF Assay Plate. This will achieve a cell density of 10,000 cells/well, which we recommend for optimal results. Maintain the culture in a 37 °C humidified incubator under a 5% CO_2 atmosphere. Change the medium every 2-3 days (200 μL /well). We recommend aspirating the medium using a multichannel pipet and not a vacuum pump as the

suction force may damage the hydrogel. The culture can be maintained for at least 16 days.

More detailed protocols for handling the assay plate and for cell seeding can be found in the 3DProSeed General Usage Manual (available upon request).

Cell Characterization

The 3DProSeed StromaLine Pancreatic CAF system has been characterized by bright-field microscopy to ensure cell penetration into the hydrogel and growth of spindle-like, fibroblastic cells into 3D networks (Figure 1). The expression of the CAF marker alpha-smooth muscle actin ($\alpha\text{-SMA}$) by cells grown in the 3DProSeed StromaLine Pancreatic CAF system, as well as their ability to assemble a fibronectin (FN)-rich extracellular matrix is assessed by immunofluorescence (Figure 2).

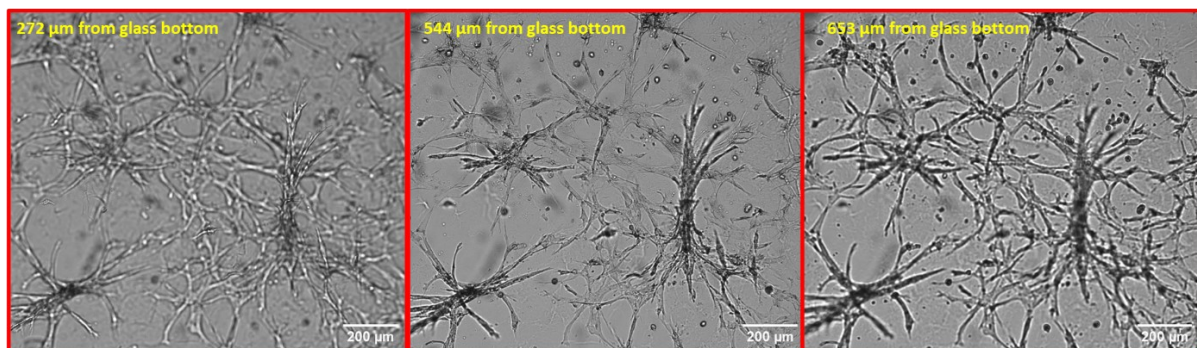


Figure 1. Representative field of view of the 3DProSeed StromaLine Pancreatic CAF culture. Bright-field images were acquired at different focal planes (272, 544, and 653 μm from the glass bottom respectively), showing a 3D cellular network spanning a volume of ~ 400 μm . Such cell morphology and density can be achieved within 6-12 days of culture following the protocol delineated in section 3. The images were acquired with a Cytation1 BioTek imager at 4x magnification. Scale bar: 200 μm .

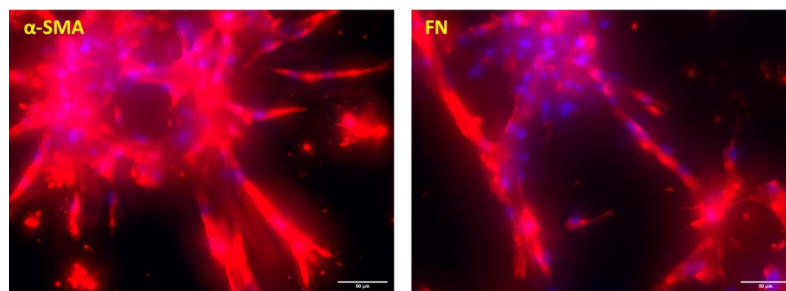


Figure 2. Representative immunofluorescence images for $\alpha\text{-SMA}$ and FN (red) of the 3DProSeed StromaLine Pancreatic CAF culture. Cell nuclei (blue) were counter-stained with Hoechst. Fluorescence images were acquired under wide-field LED illumination with a Cytation1 BioTek imager at 20x magnification, and maximum intensity z-projections are shown. Scale bar: 50 μm .

Product Add-ons

The phenotype of pancreatic CAF is affected by the stiffness of their microenvironment. Upon request, we

can offer the StromaLine Pancreatic CAF product with assay plates of different hydrogel surface densities, as a way of tuning cell morphology, planarity, density, and deposition of collagen I (Figure 3).

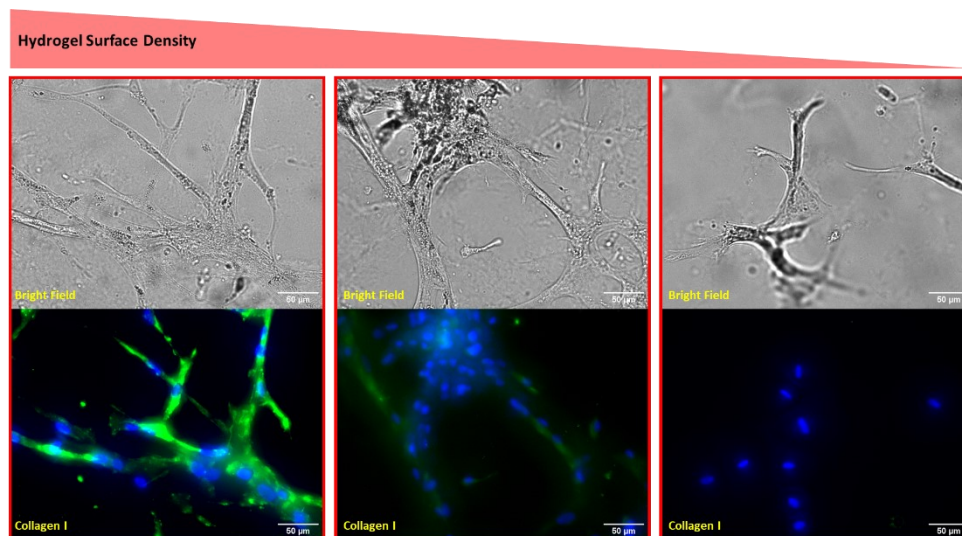


Figure 3. Representative fields of view of 3DProSeed StromaLine Pancreatic CAF cultures in assay plates of reducing hydrogel surface density (from left to right). Bright-field images (top panel; one slice at the middle of the stack) and corresponding immunofluorescence images (green) for collagen I (bottom panel; maximum intensity z-projections) are shown. Cell nuclei (blue) were counter-stained with Hoechst. The images were acquired under wide-field LED illumination with a Cytation1 BioTek imager at 20x magnification. Scale bar: 50 µm.

Quality Control

The patient donor for the StromaLine Pancreatic CAF (part nr. ECT.STRL.PACAF.096/01) was tested negative for HBV, HCV, HIV-1, and Syphilis according to FDA regulations. Cell viability after recovery from cryopreservation has been assessed to 96% by Propidium Iodide staining.

The StromaLine Pancreatic CAF Medium (part nr. ECT.STRL.PACAF.096/02) was formulated for optimal growth of the StromaLine Pancreatic CAF (part nr. ECT.STRL.PACAF.096/03) on the StromaLine Pancreatic CAF Assay Plate.

The hydrogel formulation of the StromaLine Pancreatic CAF Assay Plate (part nr. ECT.STRL.PACAF.096/03) was optimized for the growth of the StromaLine Pancreatic CAF (part nr. ECT.STRL.PACAF.096/01). It was tested negative for microorganisms according to ISO 11737-1, and it has a particle count/well <10, based on microscopic inspection.

Certificates of analysis (CoA) for all products contained in the StromaLine Pancreatic CAF system are available upon request.

Ectica Technologies AG
Raefelstrasse 24 - 8045 Zurich, Switzerland
www.ectica-technologies.com
info@ectica-technologies.com

2022-V1

Warranty

The products contained in the StromaLine Pancreatic CAF system are performance assayed together and guaranteed to lead within 6-12 days to the development of α -SMA and FN positive cell cultures with a morphology and density as shown in Figure 1 in section 4, when following the protocol delineated in section 3.

This product is intended for research use only. It is not approved for human or veterinary use, for application to humans or animals, or for use in diagnostic or clinical or *in vitro* procedures.

Warning

STROMALINE PANCREATIC CAF (ECT.STRL.PACAF.096/01) IS TESTED NEGATIVE FOR HBV, HCV, HIV-1, AND SYPHILIS ACCORDING TO FDA REGULATIONS, THIS MATERIALS SHOULD BE HANDLED AS POTENTIALLY BIOHAZARDOUS (BIOLOGICAL SAFETY LEVEL 2), FOLLOWING APPROPRIATE INSTITUTIONAL PROCEDURES AND UNIVERSAL PRECAUTIONS.

ECTICA
TECHNOLOGIES